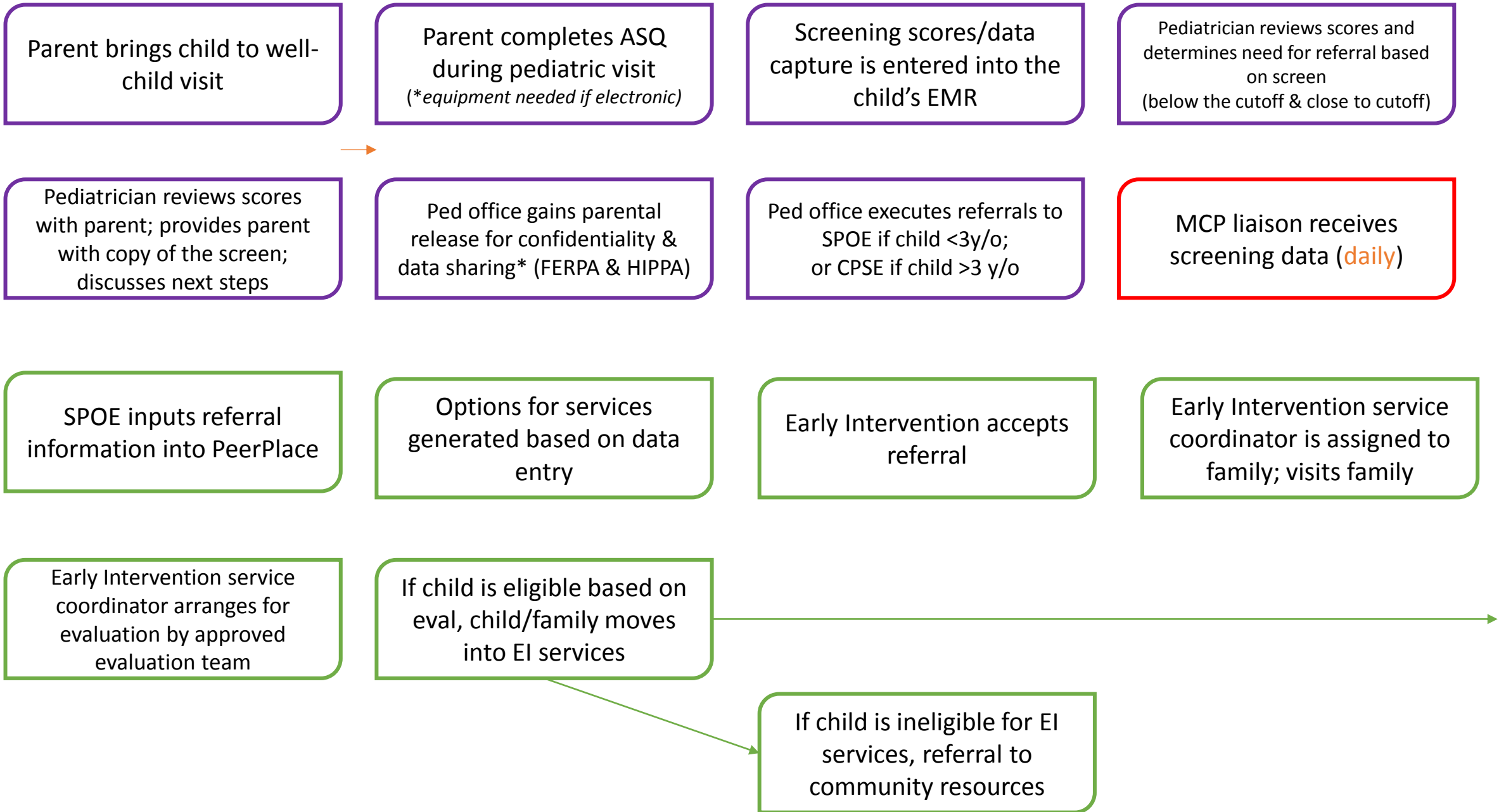


All Albany Children Ready School Readiness Pilot Project Process Map V.3.

NOTES:

- i. The following process map shows an ideal state of the proposed project, not the current state.
- ii. The color of the box indicates the sphere of influence associated with the step (purple indicates pediatricians, red indicates managed care plans, green indicates Albany County)
- iii. Orange text indicates a decision point as to which partner will be responsible for the action described.



* Possible that new, standardized documents/tools needed

Early Intervention creates feedback loop w/pediatrician and MCP liaison by 45 days

Pediatrician conducts 1st follow-up with family of referred child

MCP liaison follows up with parent/family if referral hasn't been executed by family

Pediatrician encourages well-child visits to parents to ensure 9, 18, and 30 month screens are completed

MCP liaison quarterly reports on screening/referrals/services to pediatricians (aggregated, not patient-level)

MCP liaison quarterly reports on screening/referrals/services to DOH/Albany Promise (aggregated, not patient-level)

In what cases? All? Those who didn't execute referral?